

Welcome to the East Area Planning Committee

- This planning committee meeting is held in public but it is not a public meeting.
- There will be an opportunity for the public to address the committee on each application.
- If you wish to speak for or against a planning application, you need to have either requested it in advance, or hand in one of the available speaker forms, or speak to the clerk.
- Information on meeting protocol and conduct at the committee is set out in the Code of Practice.
- This is in the committee agenda just before the first planning application report.

Site Location Plan

58



59

8 Jersey Road from the front



60

Side view of front garden – parking area





61

Rear of 8 Jersey Road showing extension to left



Areas without colour are unoccupied or communal access areas



Area of CLEUD
12/00434/CEU



GROUND FLOOR



FIRST FLOOR

Existing Floor Plans

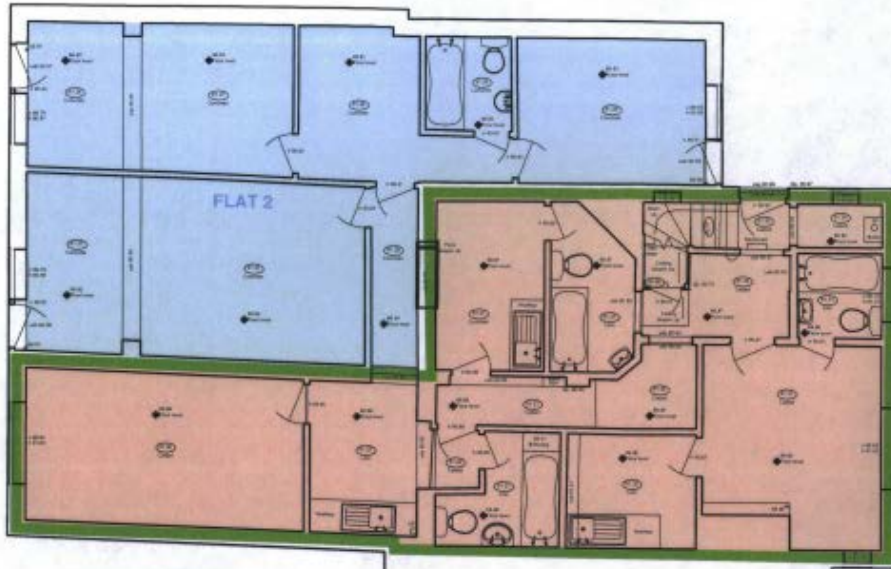




Areas without colour are communal access areas



Area of CLEUD
12/00434/CEU



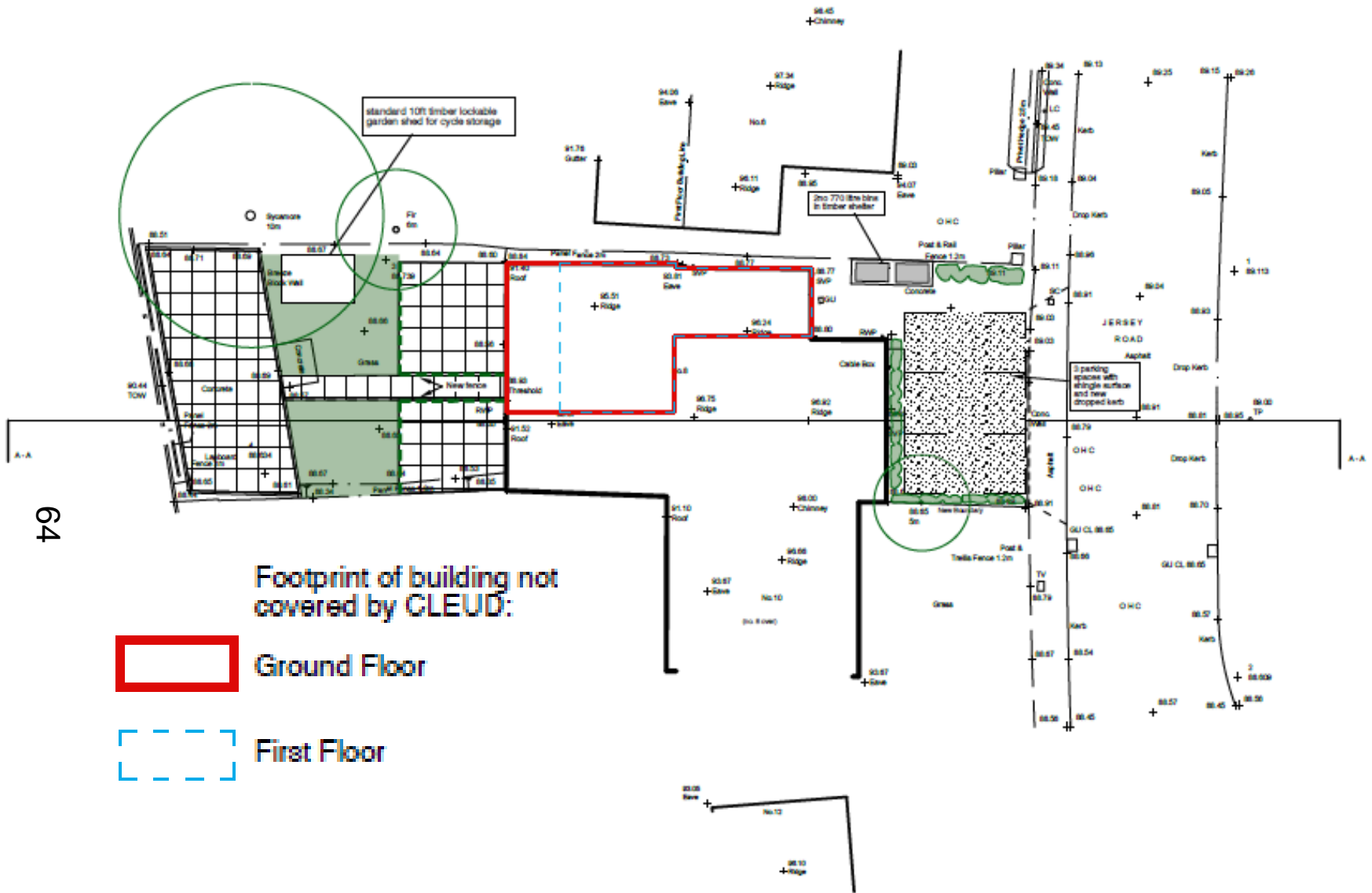
GROUND FLOOR



FIRST FLOOR



Proposed Floor Plans



Site plan showing areas not covered by Certificate of Lawful Use.